



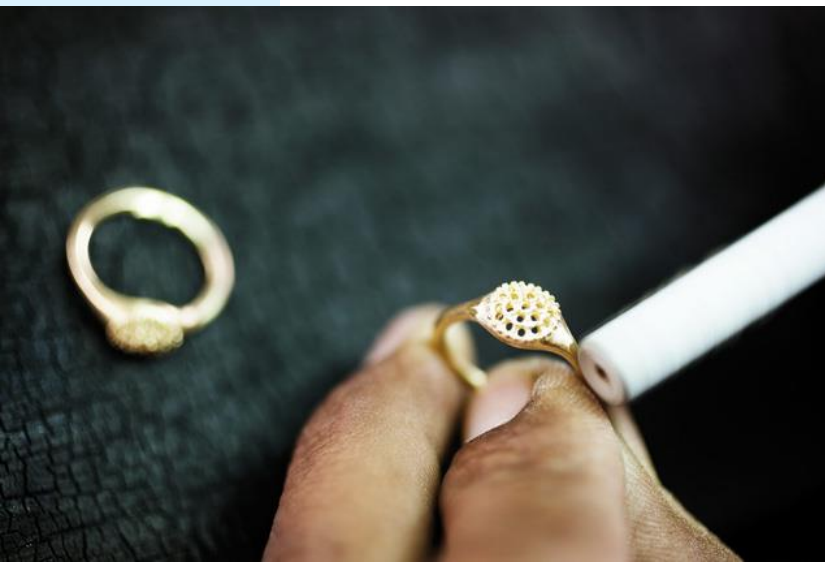
RJC Standards: supporting responsible sourcing in the jewellery supply chain

Marieke van der Mijn – Standards Coordinator

LBMA-RJC Responsible Gold Forum, Lima - 11 November 2014

Why is responsible sourcing important?

- Better control over supply chains
- Identify and manage corporate risk
- Proactive CSR strategy, enhance business reputation
- New markets, consumer expectations
- Compliance eg Dodd Frank Act, EU Draft Conflict Minerals Legislation, OECD Due Diligence Guidance



Jewellery supply chains - challenges

- Supply chains are complex and multi-tiered, as for many manufacturing sectors
- Varies from mass production to bespoke
- Many small family businesses in the sector
- Often hundreds of suppliers of products and product components
- Orders and volumes frequently changing with seasonal designs, fashion and consumer demand



RJC's framework for responsible sourcing

RJC Chain-of-Custody standard (CoC) provides platform for growth in responsible sourcing in the jewellery supply chain

- Aims to support claims for responsibly-sourced jewellery materials (known as CoC Material) produced, processed and traded through the jewellery supply chain
- Builds on **RJC Code of Practices (COP)** by requiring the COP (or equivalent) as a companion Certification
- Therefore covers **more than conflict**
- Uptake mainly with refiners at present (13) and more in the pipeline
- **Refiners** can use the RJC CoC standard to be audited according to the OECD Due Diligence Guidance
- **Cross-recognition** with LBMA , DMCC and Conflict-free Sourcing Initiative



Why mining participation is important

- Massive sector yet still only very small aggregate uptake of certification with little growth
- High risk sector re sustainability: RJC Code of Practices includes specific section on Responsible Mining Practices that additionally apply
- Working with partners eg Solidaridad, Swiss Better Gold Initiative on outreach, particularly with small to medium sized companies
- Gold refiners also reaching out to their mining suppliers, but business case more difficult when gold is a sellers market
- To deliver responsible supply chains from mine to market, participation of mines is key



Building bridges with Artisanal and Small-Scale Mining (ASM)

Responsible sourcing – challenge and opportunity for ASM

RJC Standards encourage formalisation and professionalisation of ASM, and control of sourcing risks. CoC provides vehicle for sourcing relationships that benefit ASM

RJC collaborations:

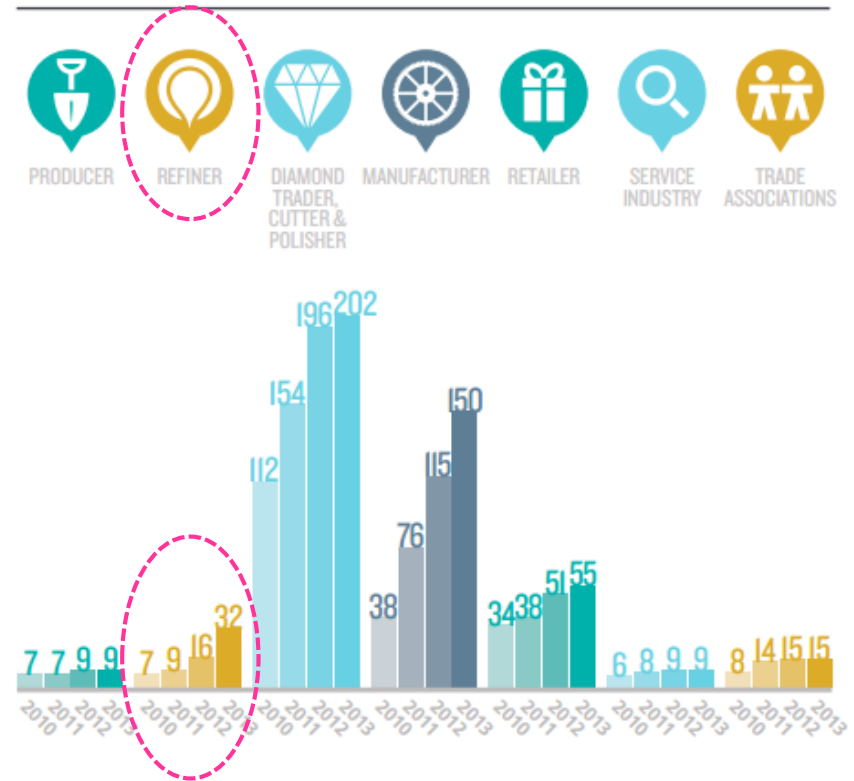
- MOU's with the Alliance for Responsible Mining (ARM) and Diamond Development Initiative (DDI)
- Collaboration with Swiss Better Gold Initiative and Solidaridad
- Active in OECD program on ASM issues



Growing interest from refiners and manufacturers in responsible sourcing

- Currently 13 Chain-of-Custody certified refiners and growing
- RJC refiner Members : 50% growth from 2012 > 2013, currently 45
- Several large brands are currently working on CoC certification, first Certs to be expected 2015

Growth in membership by Sector





Thank you – Questions are welcome!

